

- ◆ Milestone
- ◆ Critical Milestones
- █ Current Works
- █ Critical Works
- █ Remaining Level of...

**CHUN WO - CRGL
JOINT VENTURE**

**CEDD CONTRACT NO. HK/2009/02
WD II - Central Wanchai Bypass at Wan Chai East (Contract 2)
3-MONTH ROLLING PROGRAMME (data date 07-Sep-18)**

Date	Revision	Checked	Approved

Activity ID	Activity Name	On Dur	Rem Dur	Scheduled /Actual Start	Scheduled / Actual Finish	Total Float	Calendar	2018																	
								August			September			October			November								
								05	12	19	26	02	09	16	23	30	07	14	21	28	04	11	18	25	02
REINSTATE BAY 12 SEAWALL																									
A1540	INSTALL SEAWALL	30	30	30-Nov-18	30-Dec-18	15	7-Day Workweek-1																		
HELIPAD																									
A1600	DISMANTLE OLD SEAWALL BLOCK AND EXCAVATE	14	14	01-Nov-18	14-Nov-18	14	7-Day Workweek-1																		
A1610	ROCKFILL G400	3	3	15-Nov-18	17-Nov-18	14	7-Day Workweek-1																		
A1620	LEVELLING	3	3	18-Nov-18	20-Nov-18	14	7-Day Workweek-1																		
A1630	1ST LAYER OF SEAWALL BLOCK	3	3	21-Nov-18	23-Nov-18	14	7-Day Workweek-1																		
A1640	2ND LAYER	3	3	24-Nov-18	26-Nov-18	14	7-Day Workweek-1																		
A1650	3RD LAYER	4	4	27-Nov-18	30-Nov-18	14	7-Day Workweek-1																		
A1660	4TH LAYER	3	3	01-Dec-18	03-Dec-18	14	7-Day Workweek-1																		
A1670	5TH LAYER	3	3	04-Dec-18	06-Dec-18	14	7-Day Workweek-1																		
COPING																									
WITHIN D-WALL (TYPE 7)																									
A1780	BAY 1 LOWER	14	14	07-Sep-18*	20-Sep-18	56	7-Day Workweek-1																		
A1790	BAY 2 LOWER	13	13	21-Sep-18	03-Oct-18	56	7-Day Workweek-1																		
A1800	BAY 1 UPPER	7	7	04-Oct-18	10-Oct-18	56	7-Day Workweek-1																		
A1810	BAY 2 UPPER	7	7	11-Oct-18	17-Oct-18	56	7-Day Workweek-1																		
EAST SIDE COPING																									
A1830	EAST COPING	31	31	17-Nov-18	17-Dec-18	39	7-Day Workweek-1																		
BOX-O																									
ARRIVAL OF PRECAST UNIT FOR BAY 12																									
A1840	ARRIVAL OF PRECAST UNIT FOR BAY 12	1	1	07-Sep-18*	07-Sep-18	62	7-Day Workweek-1																		
INSTALLATION OF PRECAST UNIT																									
A1850	INSTALLATION OF PRECAST UNITS	19	19	25-Oct-18	13-Nov-18	15	7-Day Workweek-1																		
A1860	BAY 1 FIX REBAR	2	2	01-Nov-18	03-Nov-18	15	7-Day Workweek-1																		
A1870	BAY 1 CONCRETE	1	1	03-Nov-18	04-Nov-18	15	7-Day Workweek-1																		
A1880	BAY 2 FIX REBAR	2	2	06-Nov-18	08-Nov-18	15	7-Day Workweek-1																		
A1890	BAY 2 CONCRETE	1	1	08-Nov-18	09-Nov-18	15	7-Day Workweek-1																		
A1900	BAY 3 FIX REBAR	2	2	13-Nov-18	15-Nov-18	15	7-Day Workweek-1																		
A1910	BAY 3 CONCRETE	1	1	15-Nov-18	16-Nov-18	15	7-Day Workweek-1																		
A1920	CLEAN UP, W/P AND B/F	13	13	17-Nov-18	30-Nov-18	15	7-Day Workweek-1																		
CONSTRUCTION OF BAY 12																									
REMOVAL OF BULKHEAD																									
A1930	BAY 19 STEEL BULKHEAD	2	0	01-Sep-18 A	05-Sep-18 A		7-Day Workweek-1																		
A1940	BAY 13 CONCRETE BULKHEAD	5	1	04-Sep-18 A	08-Sep-18	15	7-Day Workweek-1																		
A1950	CONSTRUCTION OF EARTH PLATFORM	6	6	08-Sep-18	14-Sep-18	15	7-Day Workweek-1																		
PIPE PILING AND GROUTING																									
A1960	WEST SIDE PIPE PILING	10	3	01-Aug-18 A	09-Sep-18	17	7-Day Workweek-1																		
A1970	WEST SIDE GROUTING	22	15	21-Aug-18 A	22-Sep-18	146	7-Day Workweek-1																		
A1980	EAST SIDE PIPE PILING	13	13	11-Sep-18	24-Sep-18	15	7-Day Workweek-1																		
A1990	EAST SIDE GROUTING	11	11	20-Sep-18	01-Oct-18	15	7-Day Workweek-1																		
EXCAVATION AND ELS																									
A2000	DEMOLISH OLD CULVERT, CUT STEEL PILE AND INSTALL ELS	10	10	21-Sep-18	01-Oct-18	15	7-Day Workweek-1																		
A2010	EXCAVATE TP -2.9mPD	8	8	01-Oct-18	09-Oct-18	15	7-Day Workweek-1																		
A2020	B/F G200 & ELS	8	8	09-Oct-18	17-Oct-18	15	7-Day Workweek-1																		
A2030	TAMPING	2	2	17-Oct-18	19-Oct-18	15	7-Day Workweek-1																		
A2040	LEVELLING	5	5	19-Oct-18	24-Oct-18	15	7-Day Workweek-1																		
HUNG HING ROAD																									
REMOVAL OF D-WALL TO +1.5mPD																									
A2050	ZONE A	21	0	13-Jul-18 A	25-Aug-18 A		7-Day Workweek-1																		
A2060	ZONE B	16	5	01-Sep-18 A	11-Sep-18	110	7-Day Workweek-1																		
A2070	ZONE C	14	14	17-Nov-18	30-Nov-18	44	7-Day Workweek-1																		
BACKFILLING																									
A2090	ZONE A	5	0	17-Aug-18 A	30-Aug-18 A		7-Day Workweek-1																		
A2100	ZONE B	7	7	11-Sep-18	18-Sep-18	149	7-Day Workweek-1																		

- ◆ Milestone
- ◆ Critical Milestones
- Current Works
- Critical Works
- Remaining Level of...

**CHUN WO - CRGL
JOINT VENTURE**

**CEDD CONTRACT NO. HK/2009/02
WD II - Central Wanchai Bypass at Wan Chai East (Contract 2)
3-MONTH ROLLING PROGRAMME (data date 07-Sep-18)**

Date	Revision	Checked	Approved

Activity ID	Activity Name	On Dur	Rem Dur	Scheduled /Actual Start	Scheduled /Actual Finish	Total Float	Calendar	2018															
								August			September			October			November						
A2110	ZONE C	5	5	01-Dec-18	05-Dec-18	71	7-Day Workweek-1																
MANHOLE																							
A2130	MH7352A	8	6	05-Sep-18 A	12-Sep-18	106	7-Day Workweek-1																
A2140	MH7354&7355	10	7	05-Sep-18 A	19-Sep-18	106	7-Day Workweek-1																
A2150	MH7341	9	9	19-Sep-18	28-Sep-18	106	7-Day Workweek-1																
DRAOMAGE																							
CH3730-3760																							
A2200	375MM DRAIN FROM SMH7354 TO BOX	16	0	31-Jul-18 A	18-Aug-18 A		7-Day Workweek-1																
A2210	375M SMH7355 TO 7354	13	4	20-Aug-18 A	10-Sep-18	16	7-Day Workweek-1																
A2220	300MM SMH734F1 TO 7355	11	10	03-Sep-18 A	21-Sep-18	16	7-Day Workweek-1																
A2230	BACKFILLING	13	13	21-Sep-18	04-Oct-18	16	7-Day Workweek-1																
A2240	AIR TEST AND CCTV	3	3	04-Oct-18	07-Oct-18	16	7-Day Workweek-1																
BCO																							
A2250	600MM DRAIN SMH7352A TO BOX	11	0	30-Jul-18 A	09-Aug-18 A		7-Day Workweek-1																
A2260	BAY 12 (1200MM TO BOX)	8	8	07-Nov-18	15-Nov-18	22	7-Day Workweek-1																
A2270	BAY 12 TO 14 GULLUES AND 225 DRAIN	12	12	24-Nov-18	06-Dec-18	22	7-Day Workweek-1																
CH3730-3760 REMAINING																							
A2280	300MM DRAIN SMH7341 TO 7353	9	9	06-Dec-18	15-Dec-18	22	7-Day Workweek-1																
ROADWORK																							
HHR																							
A2390	ROAD FORMATION	12	12	30-Sep-18	12-Oct-18	16	7-Day Workweek-1																
A2400	TESTING	10	10	12-Oct-18	22-Oct-18	16	7-Day Workweek-1																
A2410	KERB	8	8	22-Oct-18	30-Oct-18	16	7-Day Workweek-1																
A2420	SUB-BASE	12	12	30-Oct-18	11-Nov-18	16	7-Day Workweek-1																
A2430	TEST	8	8	11-Nov-18	19-Nov-18	16	7-Day Workweek-1																
A2440	ROAD FORMATION	3	3	19-Nov-18	22-Nov-18	16	7-Day Workweek-1																
A2450	TEST AND SUB-BASE	11	11	22-Nov-18	03-Dec-18	16	7-Day Workweek-1																
A2460	ROAD FURNITURE	14	14	28-Nov-18	12-Dec-18	16	7-Day Workweek-1																
A2470	BLACK TOP	9	9	03-Dec-18	12-Dec-18	16	7-Day Workweek-1																
600mm Sewere																							
FIRST STAGE																							
A2500	600MM SEWER	5	1	26-Jul-18 A	07-Sep-18	97	7-Day Workweek-1																
A2510	B/F	5	5	08-Sep-18	12-Sep-18	97	7-Day Workweek-1																
A2520	SUB-BASE	9	9	13-Sep-18	21-Sep-18	97	7-Day Workweek-1																
A2530	BLACKTOP	2	2	22-Sep-18	23-Sep-18	97	7-Day Workweek-1																
A2540	TTA	1	1	24-Sep-18	24-Sep-18	97	7-Day Workweek-1																
SECOND STAGE																							
A2550	600MM SEWER	12	12	25-Sep-18	06-Oct-18	97	7-Day Workweek-1																
A2560	B/F	5	5	07-Oct-18	11-Oct-18	97	7-Day Workweek-1																
A2570	SUB-BASE	9	9	12-Oct-18	20-Oct-18	97	7-Day Workweek-1																
A2580	BLACKTOP	2	2	21-Oct-18	22-Oct-18	97	7-Day Workweek-1																
A2590	TTA	1	1	23-Oct-18	23-Oct-18	97	7-Day Workweek-1																
FINAL STAGE																							
A2600	600MM SEWER mh4.13 TO 4.15 TO 4.17	11	11	24-Oct-18	03-Nov-18	97	7-Day Workweek-1																
A2610	AIR TEST	1	1	04-Nov-18	04-Nov-18	97	7-Day Workweek-1																
A2620	b/f	3	3	05-Nov-18	07-Nov-18	97	7-Day Workweek-1																
A2630	AIR TEST AND CCTV	2	2	08-Nov-18	09-Nov-18	97	7-Day Workweek-1																
EXPO DRIVE, WCR1 & WCR3 REMAINING WORKS																							
A2650	CMS INSTALLATION	11	1	28-Jul-18 A	08-Sep-18	101	7-Day Workweek-1																
A2660	WCR1 U CHANNELS	50	50	07-Sep-18*	26-Oct-18	52	7-Day Workweek-1																
A2670	EXPO DRIVE COVER REMEDIAL	46	23	15-Aug-18 A	29-Sep-18	123	7-Day Workweek-1																
A2680	EXPO DRIVE COPING	28	28	17-Sep-18	14-Oct-18	123	7-Day Workweek-1																
A2690	WCR1 EVA	59	59	01-Nov-18*	29-Dec-18	47	7-Day Workweek-1																
A2700	WCR3 SUB-BASE	24	24	17-Nov-18*	10-Dec-18	61	7-Day Workweek-1																
A2710	REPAIR COPING	11	11	29-Nov-18*	09-Dec-18	67	7-Day Workweek-1																

- ◆ Milestone
- ◆ Critical Milestones
- █ Current Works
- █ Critical Works
- █ Remaining Level of...

**CHUN WO - CRGL
JOINT VENTURE**

**CEDD CONTRACT NO. HK/2009/02
WD II - Central Wanchai Bypass at Wan Chai East (Contract 2)
3-MONTH ROLLING PROGRAMME (data date 07-Sep-18)**

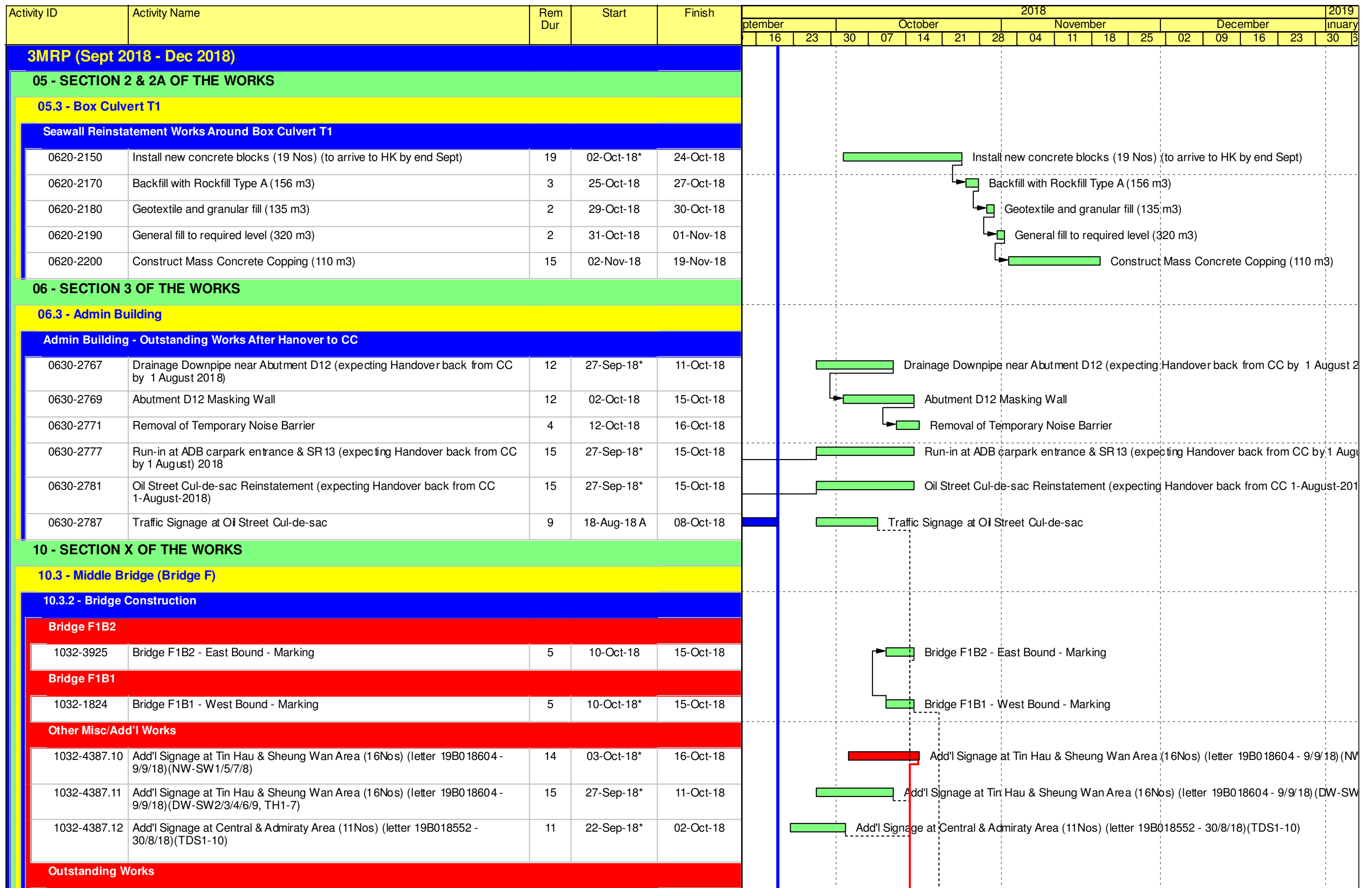
Date	Revision	Checked	Approved

Activity ID	Activity Name	On Dur	Rem Dur	Scheduled /Actual Start	Scheduled / Actual Finish	Total Float	Calendar	2018																	
								August				September				October				November					
								05	12	19	26	02	09	16	23	30	07	14	21	28	04	11	18	25	02
A2720	WCR1&3 ARMOUR SLOPE PROFILE	31	31	01-Dec-18*	31-Dec-18	45	7-Day Workweek-1																		
A2740	REINSTATE WCR3 EXIT	23	23	24-Sep-18*	16-Oct-18	121	7-Day Workweek-1																		
A2750	WCR3 FENCING	23	23	09-Nov-18*	01-Dec-18	75	7-Day Workweek-1																		

<ul style="list-style-type: none"> ◆ ◆ Milestone ◆ ◆ Critical Milestones Current Works Critical Works Remaining Level of... 	<p>CHUN WO - CRGL JOINT VENTURE</p>	<p>CEDD CONTRACT NO. HK/2009/02 WD II - Central Wanchai Bypass at Wan Chai East (Contract 2) 3-MONTH ROLLING PROGRAMME (data date 07-Sep-18)</p>	Date	Revision	Checked	Approved

CEDD Contract No. HK/2012/08
Wan Chai Development Phase II
Central - Wan Chai Bypass at Wan Chai West

Activity ID	Activity Name	Remaining Dur	Early Start	Early Finish	Activity % Complete	2018												2019					
						Jan	Feb	Mar	Apr	May	Jun	Jul	Aug	Sep	Oct	Nov	Dec	Jan	Feb	Mar	Apr	May	Jun
Promenade Seawall Parapet Construction & EVA																							
SVII12000	Sec VII - Precast parapet	67	18-Nov-17 A	14-May-18	0%																		
SVII12010	Sec VII - Zone CRIII - seawall parapet: Backfilling	14	20-Feb-18	07-Mar-18	0%																		
SVII12120	Sec VII - Zone CRIII - seawall parapet: Construct mass concrete coping	30	08-Mar-18	16-Apr-18	0%																		
SVII12122	Sec VII - Zone CRIII - seawall parapet: reinforced concret coping	17	17-Apr-18	07-May-18	0%																		
SVII12140	Sec VII - Zone CRIII - seawall parapet: construct seawall parapet	30	08-May-18	12-Jun-18	0%																		
SVII12160	Sec VII - CRIII - EVA: watermain	14	13-Jun-18	29-Jun-18	0%																		
SVII12180	Sec VII - CRIII - EVA: U-channel	14	30-Jun-18	17-Jul-18	0%																		
SVII12200	Sec VII - CRIII - EVA: bituminous layer	5	18-Jul-18	23-Jul-18	0%																		
SVII12220	Sec VII - CRIII - EVA: paving block	30	24-Jul-18	27-Aug-18	0%																		
SVII13120	Sec VII - Zone A1, A2 & B - seawall parapet: Construct mass concrete coping	14	28-Dec-17 A	07-Mar-18	68.18%																		
SVII13122	Sec VII - Zone A1, A2 & B - seawall parapet: reinforced concrete coping	18	08-Mar-18	28-Mar-18	0%																		
SVII13140	Sec VII - Zone A1, A2 & B - seawall parapet: Construct seawall parapet	30	09-Apr-18	14-May-18	0%																		
SVII13160	Sec VII - Zone A1, A2 & B - EVA: watermain	14	15-May-18	31-May-18	0%																		
SVII13180	Sec VII - Zone A1, A2 & B - EVA: U-channel	14	01-Jun-18	16-Jun-18	0%																		
SVII13182	Sec VII - Zone A1, A2 & B - EVA: bituminous layer	5	19-Jun-18	23-Jun-18	0%																		
SVII13184	Sec VII - Zone A1, A2 & B - EVA: paving block	30	25-Jun-18	30-Jul-18	0%																		
SVII13200	Sec VII - Zone D - seawall parapet: Remove temporary seawall block	21	07-Mar-18	03-Apr-18	0%																		
SVII13220	Sec VII - Zone D - seawall parapet: Construct mass concrete	30	04-Apr-18	10-May-18	0%																		
SVII13222	Sec VII - Zone D - seawall parapet: reinforced concrete coping	18	11-May-18	01-Jun-18	0%																		
SVII13240	Sec VII - Zone D - seawall parapet: Construct seawall parapet	25	02-Jun-18	03-Jul-18	0%																		
SVII13260	Sec VII - Zone D - EVA : watermain	14	04-Jul-18	19-Jul-18	0%																		
SVII13280	Sec VII - Zone D - EVA : U-channel	14	20-Jul-18	04-Aug-18	0%																		
SVII13300	Sec VII - Zone D - EVA : bituminous layer	5	06-Aug-18	10-Aug-18	0%																		
SVII13320	Sec VII - Zone D - EVA : paving block	30	11-Aug-18	14-Sep-18	0%																		
Promenade Footpath																							
Section 1																							
SVII10440	Sec VII - section 1 footpath - drainage works : connection pipe & U -channel	10	24-May-18	04-Jun-18	0%																		
SVII10445	Sec VII - section 1 footpath - watermain	7	05-Jun-18	12-Jun-18	0%																		
SVII10460	Sec VII - section 1 footpath - lighting	7	13-Jun-18	21-Jun-18	0%																		
SVII10500	Sec VII - section 1 footpath - paving block	21	22-Jun-18	17-Jul-18	0%																		
Section 2																							
SVII12610	Sec VII - section 2 footpath - drainage works : L2202 - L2203A	20	20-Feb-18	14-Mar-18	0%																		
SVII12615	Sec VII - section 2 footpath - watermain	7	15-Mar-18	22-Mar-18	0%																		
SVII12630	Sec VII - section 2 footpath - utilities: TCSS	21	23-Mar-18	20-Apr-18	0%																		
SVII12670	Sec VII - section 2 footpath - paving block	30	21-Apr-18	28-May-18	0%																		
Section 3																							
SVII12850	Sec VII - section 3 footpath - watermain	17	20-Feb-18	10-Mar-18	0%																		
SVII12870	Sec VII - section 3 footpath - utilities (HEC, TCSS, HGC, PCCW)	40	12-Mar-18	02-May-18	0%																		
SVII12875	Sec VII - 3 footpath - drainage works :U chanel	14	03-May-18	18-May-18	0%																		



Remaining Level of Effort	Remaining Work
Actual Level of Effort	Critical Remaining Work
Actual Work	Milestone

Contract HY/2009/19
Three Months Rolling Programme (20.Sept.2018 to 20.Dec.2018)

Activity ID	Activity Name	Original Duration	Start	Finish	2018			
					Sep	Oct	Nov	Dec
Total		2421d	21-Mar-13 A	05-Nov-19				
DWP-08 - (2) - Update Progress As of 20 Sep 18		2421d	21-Mar-13 A	05-Nov-19				
Works in KD9 (Include Re-provisioning Works of KD4,KD5)		339d	30-Jan-18 A	24-Dec-18				
External Works Under KD9		178d	30-Jan-18 A	20-Dec-18				
Zone 4 up to Elderly Facilities		178d	30-Jan-18 A	20-Dec-18				
Elderly Facilities V/039 Received on 22 Jun 2017		178d	30-Jan-18 A	20-Dec-18				
EXW_2270	Facilities fabrication	90d	30-Jan-18 A	15-Nov-18				Facilities fabrication
EXW_2280	Ground levelling, drainage works and safety met installation	30d	16-Nov-18	20-Dec-18				Ground levelling, drainage works and safety met installation
Additional Walkway & Arbour V/040 Received on 22 Aug 2017		30d	03-May-18 A	31-Oct-18				
EXW_2320	Arbour installation and walkway construction	30d	03-May-18 A	31-Oct-18				Arbour installation and walkway construction
Reverting Traffic for IEC,VP Rd & TF St & Seawall Reinstatement (KD9)		256d	13-Apr-18 A	24-Dec-18				
TTA Revert Traffic Back to Original Alignment		171d	13-Apr-18 A	04-Oct-18				
East Bound TTA - IEC East Bound, Victoria Park Road & footpath along Sea Side		10d	21-Sep-18	30-Sep-18				
TTM Stage 1 - IEC (East Bound)		6d	21-Sep-18	26-Sep-18				
Reinstatement Existing Structure		6d	21-Sep-18	26-Sep-18				
EB_1020	Install metal parapet on parapet wall (30m)	6d	21-Sep-18	26-Sep-18				Install metal parapet on parapet wall (30m)
TTM Stage 2 - Revert Traffic back to Original Victoria Road		4d	27-Sep-18	30-Sep-18				
Existing Bridge Parapet Reinstatement		4d	27-Sep-18	30-Sep-18				
EB_1180	Install metal parapet on parapet wall (40m)	4d	27-Sep-18	30-Sep-18				Install metal parapet on parapet wall (40m)
West Bound - IEC West Bound & Tsing fung Street		166d	13-Apr-18 A	04-Oct-18				
TTM Stage 2 - Revert Traffic back to Original Tsing Fung Street		5d	21-Sep-18	25-Sep-18				
Existing Bridge Parapet Reinstatement		5d	21-Sep-18	25-Sep-18				
IECW_1140	Install metal parapet on parapet wall (60m)	5d	21-Sep-18	25-Sep-18				Install metal parapet on parapet wall (60m)
TTM Stage 3 - Reinstatement of Victoria Park		21d	13-Apr-18 A	04-Oct-18				
Reinstatement Works inside Victoria Park		21d	13-Apr-18 A	04-Oct-18				
IECW_1470	Slope Reinstatement of Victoria Park	21d	13-Apr-18 A	04-Oct-18				Slope Reinstatement of Victoria Park
Completion of Minor Outstanding / Remaining Works for KD9		200d	03-May-18 A	24-Dec-18				
East Bound - Minor Outstanding Works in Footpath after Substantial Completion of KD9		150d	18-May-18 A	08-Oct-18				
Minor Reinstatement Works for Existing Sign Gantry		3d	14-Sep-18 A	19-Sep-18 A				
EB_1760	Connection of Public Lighting by HyD (Lighting)	2d	14-Sep-18 A	18-Sep-18 A				Connection of Public Lighting by HyD (Lighting)
EB_1790	Installation of E & M at Sign Gantry (night work)	1d	19-Sep-18 A	19-Sep-18 A				Installation of E & M at Sign Gantry (night work)
Minor Reinstatement Works for Central Median of IEC & Footbridge		6d	01-Oct-18	06-Oct-18				
EB_1800	Reconstruction of central divider (6m long, night work)	6d	01-Oct-18	06-Oct-18				Reconstruction of central divider (6m long, night work)
EB_1810	Dismantlement of temp directional sign mounted on extg footbridge	1d	01-Oct-18	01-Oct-18				Dismantlement of temp directional sign mounted on extg footbridge
Minor Reinstatement Works for Footpath		150d	18-May-18 A	08-Oct-18				
EB_1820	Place kerblines along VPR footpath	3d	18-May-18 A	17-Sep-18 A				Place kerblines along VPR footpath
EB_1840	Re-provision of Tree	8d	27-Sep-18 A	08-Oct-18				Re-provision of Tree
EB_1830	Reinstatement of District Council Welcome Sign and opening plaque at Planter area	1d	03-Oct-18 A	03-Oct-18 A				Reinstatement of District Council Welcome Sign and opening plaque at Planter area
Minor Reinstatement Works for Bus Stop		5d	20-Jul-18 A	05-Oct-18				
EB_1880	Reinstate Planter (Previous Temporary Bus Stop)	5d	20-Jul-18 A	05-Oct-18				Reinstate Planter (Previous Temporary Bus Stop)
Minor Reinstatement Works for Loop Detector		1d	23-Aug-18 A	24-Aug-18 A				
EB_1890	E&W work for Reinstatement of Loop Detector (ILDS) by EMSD (night work)	1d	23-Aug-18 A	24-Aug-18 A				E&W work for Reinstatement of Loop Detector (ILDS) by EMSD (night work)
West Bound - Completion of Minor Outstanding / Remaining Works for KD9		142d	03-May-18 A	24-Dec-18				



- Actual Work
- Remaining Work
- Critical Remaining Work
- ◆ Milestone

Date	Revision	Checked	Approved
20-Sep-18	DWP-08 (2) - 3 Months Rolling	TL	TL

Activity ID	Activity Name	Original Duration	Start	Finish	2018			
					Sep	Oct	Nov	Dec
Minor Reinstatement Works for Victoria Park								
IECW_1500	Re-provision of Tree	32d	03-May-18 A	05-Nov-18				Re-provision of Tree
IECW_1510	Laying Irrigation Main	10d	27-Sep-18 A	14-Oct-18				Laying Irrigation Main
IECW_1520	Construct Landscape Footpath and Lightings	7d	20-Oct-18	26-Oct-18				Construct Landscape Footpath and Lightings
Minor Reinstatement Works in IEC West Bound								
IECW_1600	Replacement of new movement joint at IEC W/B (Sun midnight only)	8d	21-Sep-18	28-Sep-18				Replacement of new movement joint at IEC W/B (Sun midnight only)
IECW_1610	Repairing of extg conc deck surface after milling of temp asphalt at IEC W/B and E/B (Sun midnight only)	57d	29-Sep-18	24-Nov-18				Repairing of extg conc deck surface after milling of temp as
IECW_1620	Repairing of concrete defects on extg concrete deck and abutment M	30d	25-Nov-18	24-Dec-18				Repairing of concrete defects on extg concrete deck and abutment M
Works in Victoria Park (KD4, KD5, KD9)								
Re-Provisioning Works								
Nursery Compound								
Nursery compound								
ABWF								
Metal Fence								
VP_NC_1820	Installation	30d	05-Apr-18 A	09-Nov-18				Installation
Fire Srevicees								
VP_NC_2030	FS inspection	14d	20-Aug-18 A	09-Oct-18				FS inspection
KD11, KD12, KD13, KD18 Establishment Works for Landscape Softworks								
KD11 - Section 7A: Portion XIV & XV (Victoria Park Open Space)								
EW_1012	Establishment Works - for Landscape Softworks and transplanted trees in Portion XV	365d	06-Nov-18	05-Nov-19				
KD13 - Section 7C: Portion IVA, VA, VIII, IX, XII (excl. DBH>500mm)								
EW_1040	Establishment Works - for Landscape Softworks and transplanted trees in Portion IVA, VA, VIII, IX, XII excl. DBH>500mm	365d	06-Nov-18	05-Nov-19				
KD18 - Section 11: Transplanted Trees DBH>500mm in Portion VA and XII								
EW_1050	Establishment Works - for Landscape Softworks and transplanted trees DBH>500mm in Portion VA, XII	365d	06-Nov-18	05-Nov-19				
KD10 - Preservation and Protection of Trees								
PPT_0000	Preservation and Protection of Existing Trees	1088d	21-Mar-13 A	28-Dec-18				
KD15 & KD8 - Mooring Components Upkeep (CBTS and ATS)								
MAR_3020	Mooring Upkeep at Portion X(10) & XVI(16) - CBTS	979d	15-May-14 A	21-Sep-18				Mooring Upkeep at Portion X(10) & XVI(16) - CBTS



中國建築工程(香港)有限公司
CHINA STATE CONSTRUCTION ENGRG. (HONG KONG) LTD.

- Actual Work
- Remaining Work
- Critical Remaining Work
- ◆ Milestone

Date	Revision	Checked	Approved
20-Sep-18	DWP-08 (2) - 3 Months Rolling	TL	TL